



GOOD SHEPHERD SENIOR APARTMENT COMPLEX



A UNIQUE OPTION

IN

SENIOR LIVING

Good Shepherd Apartments is a non-smoking facility.



Two Bedroom Unit
(Approx. 880 Sq. ft.)



One Bedroom Unit
(Approx. 612 Sq. Ft.)

History:
The congregation of the Lutheran Church of the Good Shepherd, recognizing a need on the west side of Eau Claire for affordable, comfortable senior housing, incorporated Good Shepherd Lutheran Foundation. The Foundation's mission was to build and operate a senior apartment complex.

Good Shepherd Senior Apartments opened in October 2001 with 24 units. A new wing with 16 apartments opened in October 2004. A final addition of 16 apartments was completed in March 2008. There are a total of 20 one-bedroom apartments and 36 two-bedroom apartments.

Since opening its doors in 2001, Good Shepherd Senior Apartments has been the premiere place to live for seniors in the Eau Claire area.

Location: 3304 14th Street
Eau Claire, WI 54703

For more information, please contact us at: 834-3587
Office Hours: M-F 9 AM - Noon



Bertelsen Hall -- Gathering room for social events

Welcome to Good Shepherd Senior Apartments!

Our apartments were specifically designed to enhance the comfort of our residents. At Good Shepherd, we strive to create an atmosphere of community and friendship.

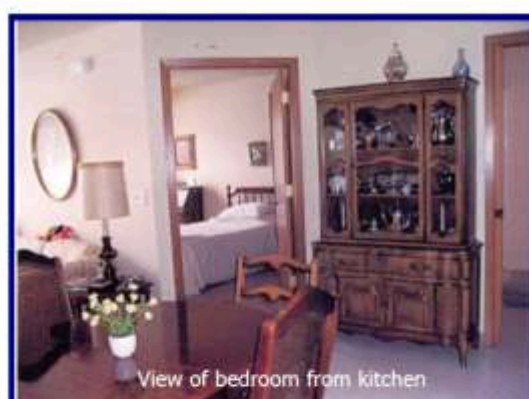


Inviting lobby area.



Kitchen area

Spacious living for the independent senior.



View of bedroom from kitchen

Good Shepherd Foundation believes that a warm environment is as important as a pleasant place to live. Individuality and a sense of community make up the foundation of Good Shepherd Apartments.



Chapel Area in Bertelsen Hall

Special Features:

- Noon meal every day; Supper meal Mon-Fri.
- Security access front door
- Meeting, Craft, and Exercise Rooms
- Guest Room for rent
- Planned activities
- Mini-bus available for transportation, for a fee
- On the bus route
- On-site laundry and maid service, if desired
- Underground parking
- Central heat and air
- Low-income apartments
- Beauty/Barber salon
- Close to Mega Foods and Dove Health Care Center
- Weekly onsite church service